



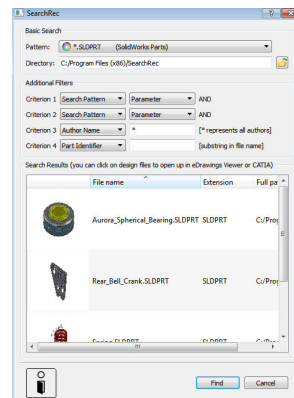
SearchRec® 1.0

SearchRec® 1.0 Overview

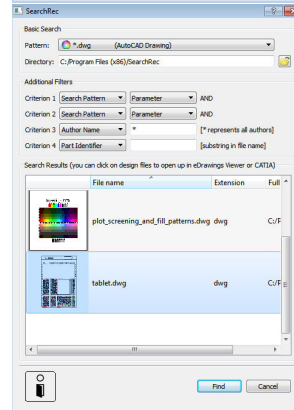
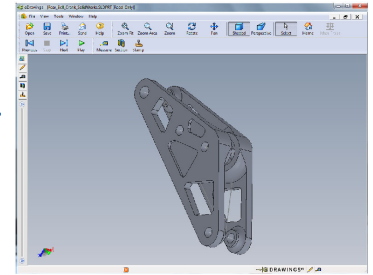
- Saves significant time in identifying parts resembling a model CAD design
- Short list of candidates quickly assembled, through visual assessment
- Seamless interface with standard CAD tools, for ultimate verification
- Real-time image extraction
- No reliance on archived thumbnails

Expeditious Identification

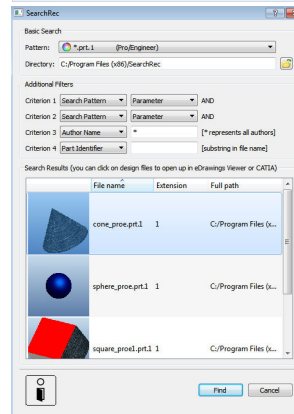
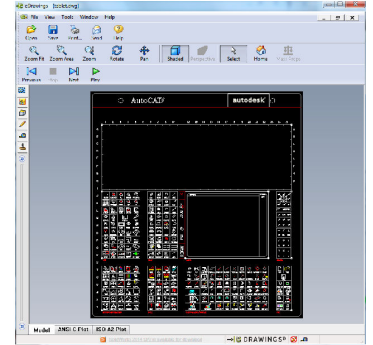
- SearchRec® is capable of visualizing 2D or 3D CAD files such as from SolidWorks, PTC Creo, AutoCAD, eDrawings, 3DXML or CATIA.
- The thumbnails provide quick, initial assessment as to whether or not given search hits resemble the design file of interest at all.
- By quickly relating (visually) to the content of the search hits, and forming an assessment as to whether or not they provide remote resemblance to the CAD file of interest, the user can quickly populate a shortlist of serious candidates and hence greatly expedite the search process.
- Upon the user double-clicking on a given design file, SearchRec® can launch the e-Drawings Viewer or CATIA, if installed.
- By carefully viewing candidates from the short list from different perspectives in 2D or 3D, the user can establish if a given candidate represents the design file of interest or not, for ultimate verification.
- Additional filters allow users to narrow down the search, by specifying a part identifier (or any substring to be contained in the names of files desired), desired authors, file size, date of the design creation or the date of the latest modification.



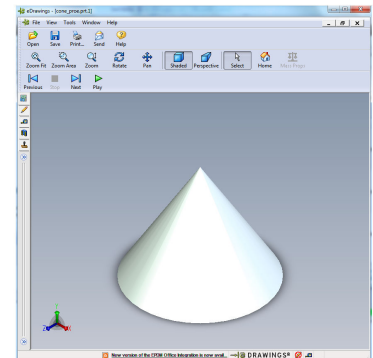
Double-click



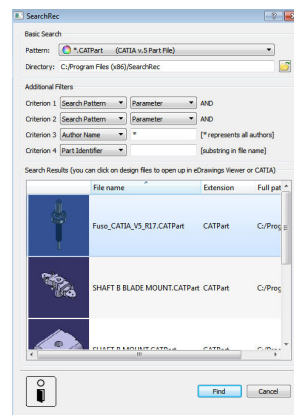
Double-click



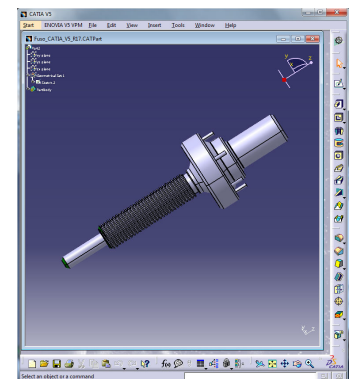
Double-click



e-Drawings Viewer (free)



Double-click



SearchRec® 1.0

CATIA v.5